

ActualtestsIT

ActualtestsIT

HOME

ALL VENDORS

★ GUARANTEE

? FAQ

TESTIMONIALS

CART (0)



Try **PDF Demo** before you buy

Online Test Engine: Online Tool, Convenient, easy to study. Instant Online Access. Supports All Web Browsers.

PDF format: Easy to read and print learning materials, our products are available in PDF file format.

Desktop Test Engine: Installable Software Application. Simulates Real Exam Environment. Practice Offline Anytime.

Select a vendor...

Select an test...

Your email address

Free Download Demo

Instant Download



After Payment, our system will send you the products you purchase in mailbox in a minute after payment. If not received within 2 hours, please contact us.

365 Days Free Updates



Free update is available within 365 days after your purchase. After 365 days, you will get 50% discounts for updating.



Money Back Guarantee

Full refund if you fail the corresponding exam in 60 days after purchasing. And Free get any another product.



Security & Privacy

We respect customer privacy. We use McAfee's security service to provide you with utmost security for your personal information & peace of mind.

<http://www.actualtestsit.com/>

Topping Certification Exam Prep, Test Dumps Materials - ActualTestsIT

Exam : **IBMSPSSSTATL1P**

Title : IBM SPSS Statistics
Certification Level 1 (formerly
PASW Statistics)

Vendor : SPSS

Version : DEMO

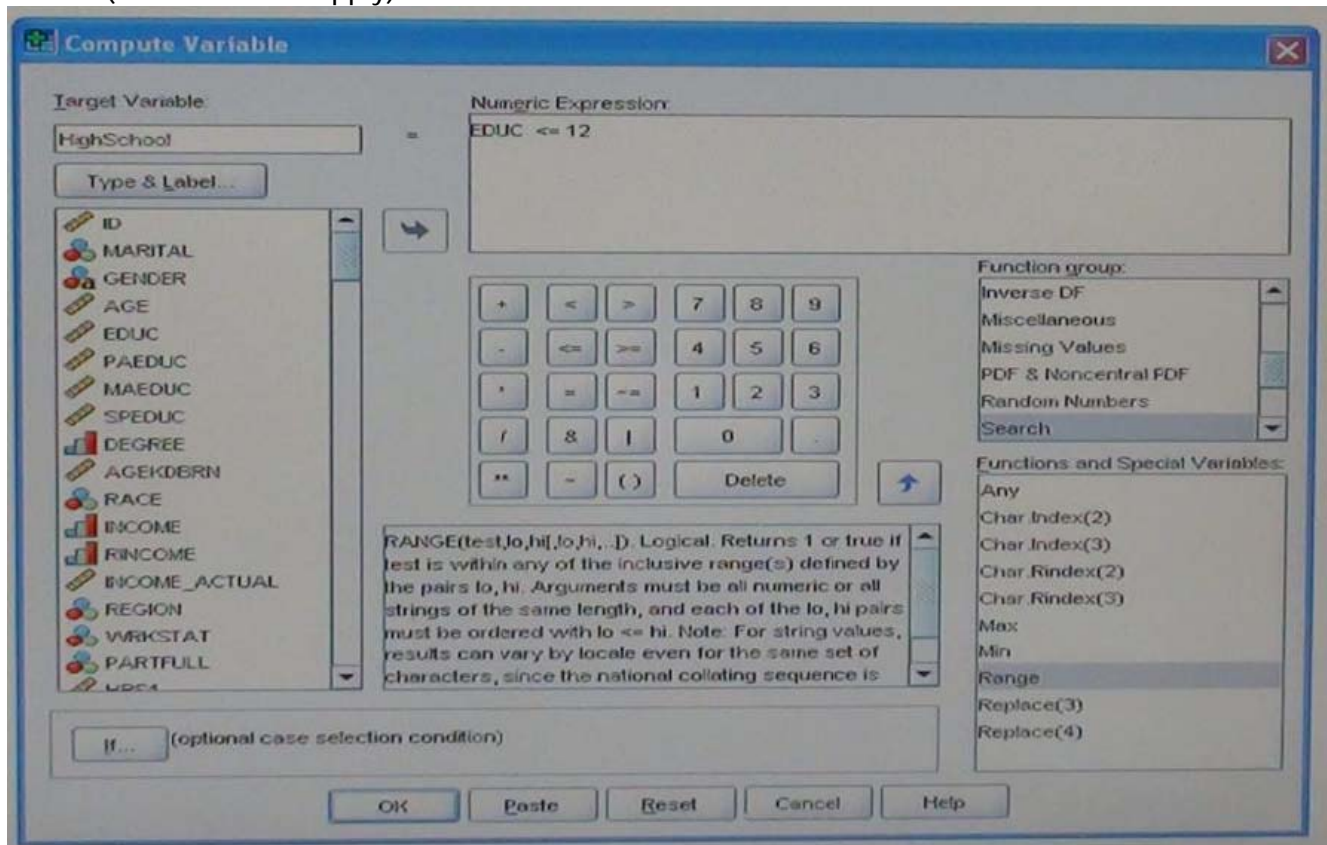
NO.1 Which chart type is appropriate for viewing the association between two scale variables?

- A. Bar Chart
- B. Area chart
- C. Pie chart
- D. Scatterplot

Answer: D

Reference: http://www.skymark.com/resources/tools/scatter_plots.asp

NO.2 Using the Compute Variable dialog below, the target variable HighSchool will have the following values. (Choose all that apply)



- A. Value 1 if EDUO is less than or equal to 12
- B. System-missing value if EDUO is greater than 12
- C. The same value as EDUO if EDUO is less than or equal to 12
- D. Value 0 if EDUO is greater than 12

Answer: A,C,D

NO.3 Which feature would you use to create a new variable whose values represent the number of times that each respondent answered strongly Agree to a series of satisfaction questions?

- A. Computer variable
- B. Visual Binning
- C. Count values within Cases
- D. Rank Cases

Answer: C

NO.4 Suppose you want to copy and paste variable definitions from 481 variables in one data file to 481 corresponding variables in a second data file.

True or false: the only way to do this is to select and copy each variable's definitions in the first file and paste to the corresponding variable in the file.

A. True

B. False

Answer: A

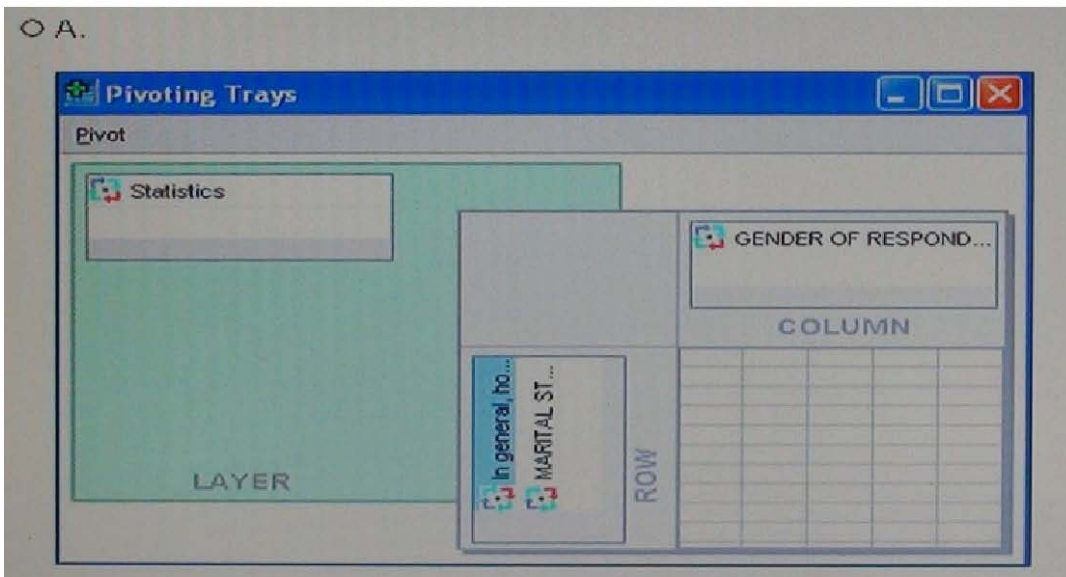
NO.5 Which Pivoting Tray corresponds to the illustrated cross tabulation?

MARITAL STATUS * GENDER OF RESPONDENT * In general, how do you find life? Crosstabulation

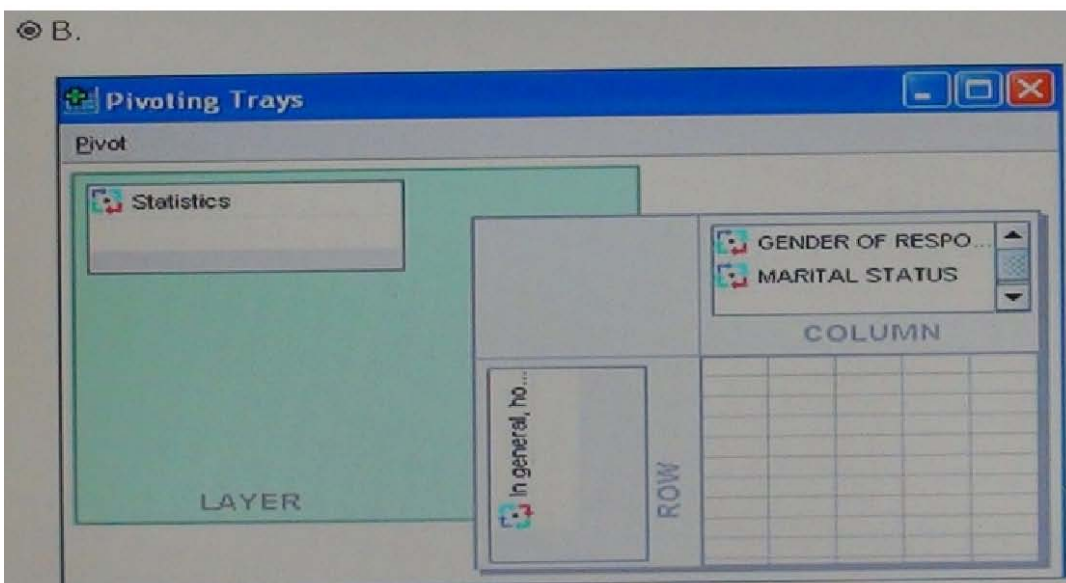
Statistics=Count

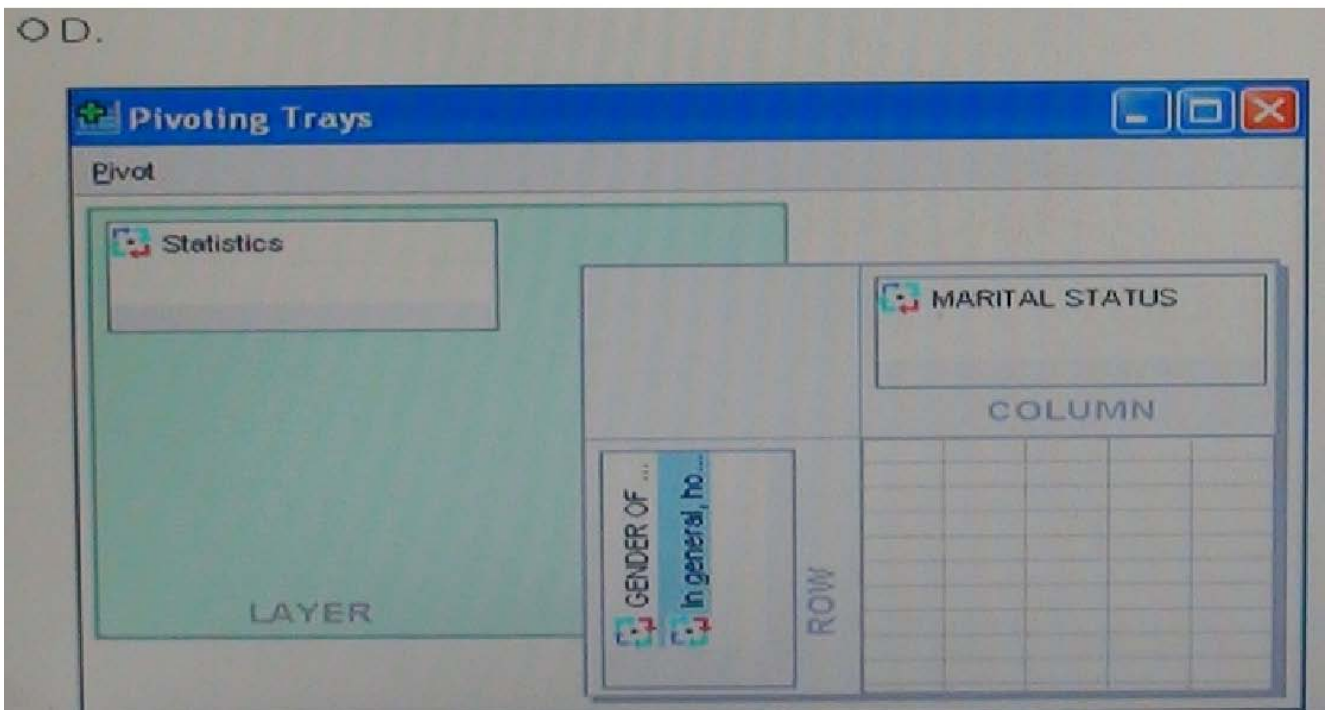
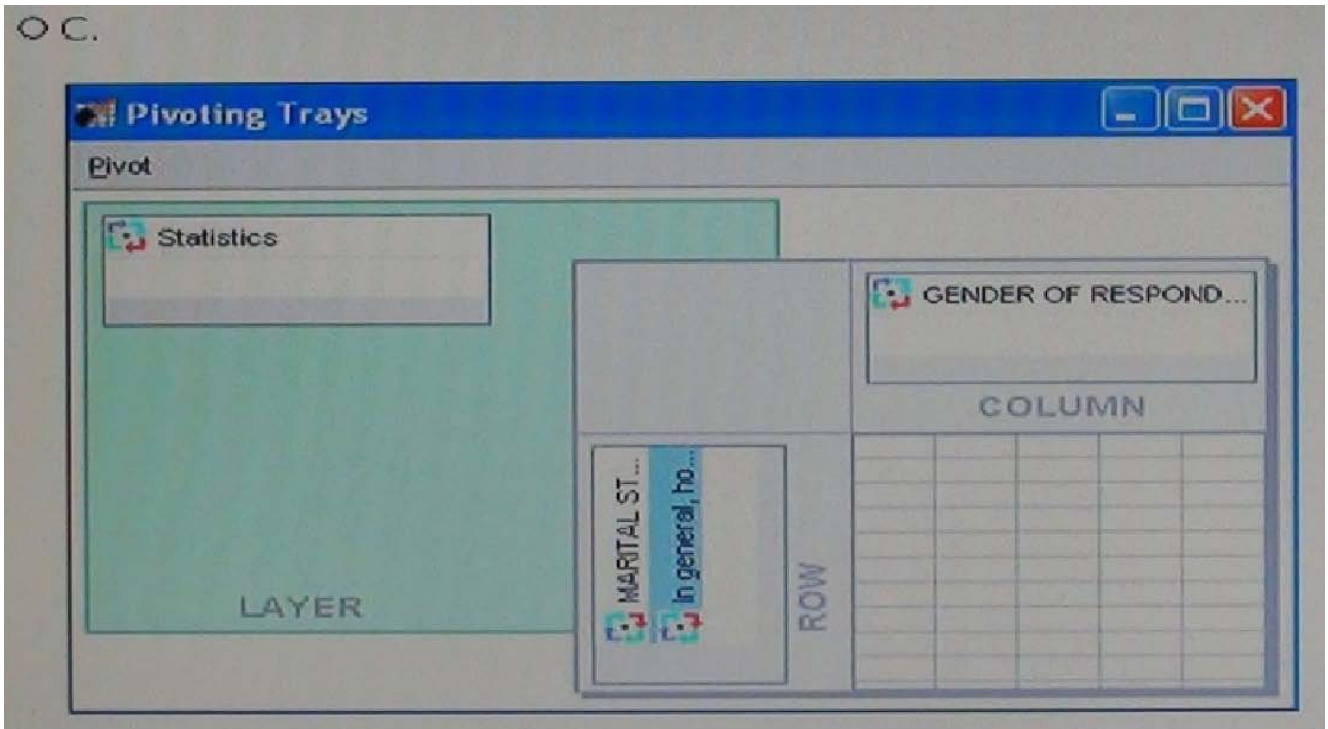
			GENDER OF RESPONDENT		Total
			Female	Male	
MARITAL STATUS	MARRIED	Exciting	119	124	243
		Routine	117	82	199
		Dull	4	7	11
	WIDOWED	Exciting	23	4	27
		Routine	26	8	34
		Dull	5	3	8
	DIVORCED	Exciting	34	36	70
		Routine	31	22	53
		Dull	3	4	7
	SEPARATED	Exciting	11	3	14
		Routine	7	8	15
		Dull	2	2	4
	NEVER MARRIED	Exciting	54	43	97
		Routine	45	58	103
		Dull	4	3	7
	Total	Exciting	241	210	451
		Routine	226	178	404
		Dull	18	19	37

○ A.



Ⓢ B.





- A. Exhibit A
- B. Exhibit B
- C. Exhibit C
- D. Exhibit D

Answer: B

NO.6 Which of following statements about the File...Save As dialog are wrongs? (Choose two)

- A. By default, the file is saved as an IBM SPSS Statistics data file

- B. You can save your data in other formats, such as Excel, Text
- C. All variables in the Data Editor must be saved
- D. You can choose to save only a subset of cases

Answer: B,C

NO.7 Which options are available to edit bar charts? (Select all that apply)

- A. Changing patterns displayed in bars
- B. Changing the major increment on the Y axis scale G3
- C. Displaying data value labels
- D. Changing the variable displayed on the X axis

Answer: B,C,D